



Highbay 11

- Durable and reliable with up to 100,000 hours of service life
- Very robust with protection class IP65 and impact resistance IK08 with accessories as well as resistance to ambient temperatures of up to 70° C

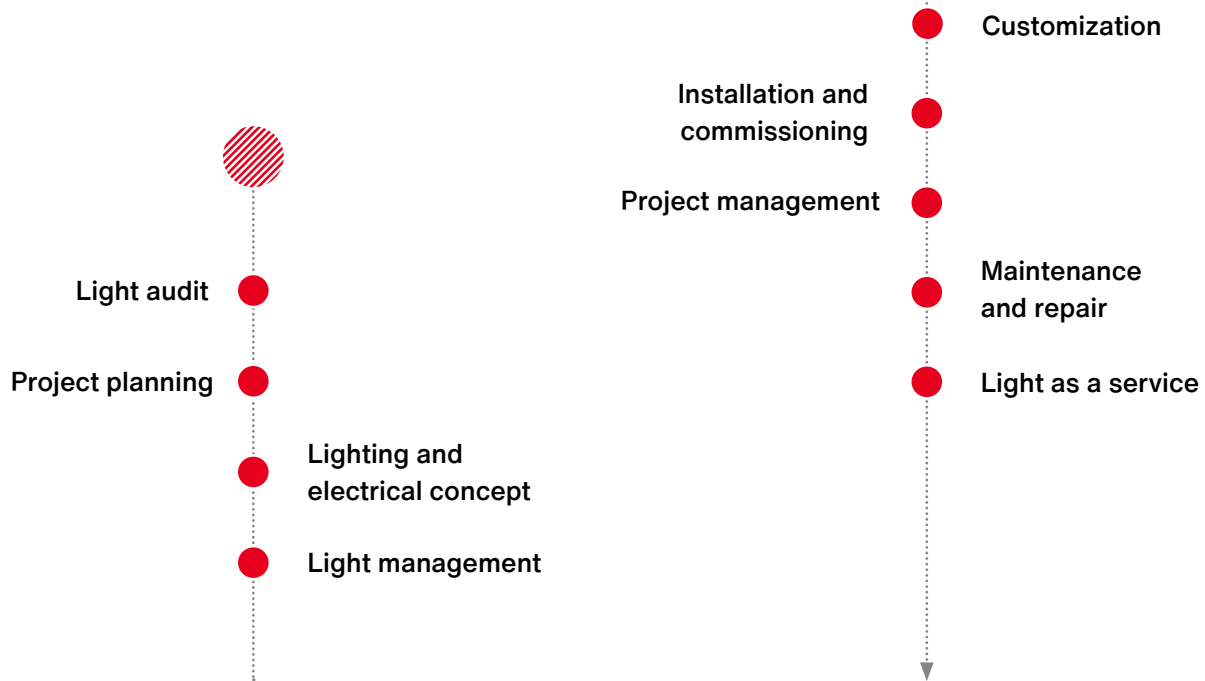
- High visual comfort thanks to very good glare control up to UGR < 22
- Highly efficient lens-based optical system with powerful LEDs and up to 177 lm/w

- Ready for a wide range of application thanks to different sizes with lumen packages up to 64.000 lm, different light distributions and mounting options

Highbay Luminaire range

A new era of hall lighting

Complex is fine. But not complicated.



Whether functional lighting or complex lighting solutions – each project is individual and depends on the lighting requirements, the existing conditions and the architectural demands. SITECO supports you in defining these parameters and converting them into an overall concept. We also speak your language – putting complex technologies into plain words. This is how we make sure that your specific requirements are taken into account and successfully implemented in the project.

SITECO – the planning and development partner for your lighting solution.

Contact.

SITECO GmbH

Georg-Simon-Ohm-Str. 50
83301 Traunreut, Deutschland
Tel. +49 8669 330
info@siteco.de

Technical Support

Tel. +49 8669 338 44
technicalsupport@siteco.de

Rated service life	50.000 h / L80 at 25° C
Luminous efficacy	130 / 140 lm / W
Luminous flux	14.000 to 26.000 lm
Ambient temperature	-30° C ... +45° C
Colour temperature	4000 K
Light distribution	narrow, wide
Colour rendering	CRI80
Glare control	UGR < 25 / 28
Protection rating/Impact resistance	IP65 / IK08
Certification	CE
Control	DALI
Accessories	reflectors/ mounting bracket
Warranty	5 years

Rated service life	50.000 h / L80 at 25° C
Luminous efficacy	130 lm / W
Luminous flux	15.000 lm to 28.000 lm
Ambient temperature	-30° C ... +50° C
Colour temperature	4000 K
Light distribution	medium / wide
Colour rendering	CRI80
Glare control	UGR < 25 / 28
Protection rating/Impact resistance	IP65 / IK08
Certification	CE
Control	ON / OFF
Accessories	reflectors/ mounting bracket
Warranty	5 years

Rated service life	50.000 h / L70 at 25° C
Luminous efficacy	135 lm / W
Luminous flux	10.500 lm to 22.300 lm
Ambient temperature	-20° C ... +40° C
Colour temperature	4000 K
Light distribution	wide
Colour rendering	CRI80
Glare control	UGR < 28
Protection rating/Impact resistance	IP65 / IK06
Certification	CE
Control	ON / OFF
Accessories	mounting bracket
Warranty	3 years

Highbay 30

Efficient, solid & intelligent controls.

The universal talent for hall lighting.



Compact Highbay

Simply good.

For typical requirements in industry and logistics.



Highbay 41

Robust and practical

For the simplest standard applications.



Highbay Luminaire range

Rated service life	△ 70.000 h / L85 at T_{max} ; ≥ 100.000 / L85 at 25° C
Luminous efficacy	up to 177 lm / W
Luminous flux	10.000 lm to 64.000 lm
Ambient temperature	-35° C ... 70° C
Colour temperature	4.000 K / (3.000 K / 5.000 K / 6.500 K)
Light distribution	narrow / wide / ellipsoid
Colour rendering	CRI80
Glare control	UGR < 22
Protection rating / Impact resistance	IP65 / IK08
Certification	ENEC
Control	DALI 2
Sensor	daylight / movement (HF / IR)
Special Features	chemical resistance / IFS
Accessories	optics / cover glass / mounting
Warranty	5 years



Highbay 11

**The absolute top model
of highbay luminaires.**
For highest requirements.

Rated service life	50.000 h / L85 at T_{max}
Luminous efficacy	up to 161 lm / W
Luminous flux	13.800 lm to 27.600 lm
Ambient temperature	-25° C ... +45° C
Colour temperature	4.000 K
Light distribution	narrow / wide
Colour rendering	CRI80
Glare control	UGR < 22
Protection rating/Impact resistance	IK08 with accessories
Certification	ENEC
Control	DALI 2
Sensor	daylight / movement (HF / IR)
Special Features	BWS / IFS
Accessories	optics / cover glass / mounting
Warranty	5 years

NEW

Highbay 21

**Reliable technology
Made in Germany.**
For high requirements
in industry and logistics.

Highbay 11

Luminaires

Light source	Colour temperature K	Colour rendering CRI	Rated luminous flux lm	Connected load W	Luminous efficacy lm / W	Control	ta	Weight kg
1 x 2 x LED	4.000	> 80	9.790	56	176	DALI	-35 ... +70°C	4,3
1 x 2 x LED	4.000	> 80	14.060	81	173	DALI	-35 ... +55°C	4,3
1 x 2 x LED	4.000	> 80	10.020	56	180	DALI	-35 ... +70°C	4,3
1 x 2 x LED	4.000	> 80	14.400	81	177	DALI	-35 ... +55°C	4,3
1 x 2 x LED	4.000	> 80	14.400	81	177	DALI	-35 ... +55°C	4,3
1 x 2 x LED	4.000	> 80	16.000	90	177	DALI	-35 ... +45°C	3,5
1 x 2 x LED	4.000	> 80	16.000	90	177	DALI	-35 ... +45°C	3,5
2 x 2 x LED	4.000	> 80	19.570	111	176	DALI (2 addresses)	-35 ... +70°C	8,8
2 x 2 x LED	4.000	> 80	28.120	162	173	DALI (2 addresses)	-35 ... +55°C	8,8
2 x 2 x LED	4.000	> 80	32.370	190	171	DALI (2 addresses)	-35 ... +45°C	8,8
2 x 2 x LED	4.000	> 80	20.050	111	180	DALI (2 addresses)	-35 ... +70°C	8,8
2 x 2 x LED	4.000	> 80	28.800	162	177	DALI (2 addresses)	-35 ... +55°C	8,8
2 x 2 x LED	4.000	> 80	33.150	190	175	DALI (2 addresses)	-35 ... +45°C	8,8
2 x 2 x LED	4.000	> 80	28.800	162	177	DALI (2 addresses)	-35 ... +55°C	8,8
2 x 2 x LED	4.000	> 80	32.370	183	177	DALI (2 addresses)	-35 ... +45°C	6,5
2 x 2 x LED	4.000	> 80	33.150	187	177	DALI (2 addresses)	-35 ... +45°C	6,5
3 x 2 x LED	4.000	> 80	48.560	284	171	DALI (3 addresses)	-35 ... +45°C	13,3

Highbay 21

Luminaires

Light source	Colour temperature K	Colour rendering CRI	Rated luminous flux lm	Connected load W	Luminous efficacy lm / W	Control	ta	Weight kg
1 x 2 LED	4.000	> 80	13.470	85	158	DALI	-25 ... +45°C	4,3
1 x 2 LED	4.000	> 80	13.800	86	161	DALI	-25 ... +45°C	4,3
2 x 2 LED	4.000	> 80	26.940	171	157	DALI (2 addresses)	-25 ... +45°C	8,8
2 x 2 LED	4.000	> 80	27.600	171	161	DALI (2 addresses)	-25 ... +45°C	8,8
2 x 2 LED	6.500	> 80	26.640	171	156	DALI (2 addresses)	-25 ... +45°C	8,8
1 x 2 LED	4.000	> 80	13.800	86	161	DALI	-25 ... +45°C	5,1
2 x 2 LED	4.000	> 80	27.600	171	161	DALI (2 addresses)	-25 ... +45°C	11,5
2 x 2 LED	4.000	> 80	27.600	171	161	DALI (2 addresses)	-25 ... +40°C	6,5
2 x 2 LED	4.000	> 80	26.940	171	157	DALI (2 addresses)	-25 ... +40°C	6,5

Highbay 30

Luminaires

Light source	Colour temperature K	Colour rendering CRI	Rated luminous flux lm	Connected load W	Luminous efficacy lm / W	Control	ta	Weight kg
LED	4.000	> 80	14.000	100	140	DALI	-30 ... +50°C	2,8
LED	4.000	> 80	14.000	100	140	DALI	-30 ... +50°C	2,8
LED	4.000	> 80	26.000	200	130	DALI	-30 ... +50°C	4
LED	4.000	> 80	26.000	200	130	DALI	-30 ... +50°C	4

Optics	Order number
narrow distribution	51HL61D14DCA
narrow distribution	51HLA1D14FCA
wide distribution	51HL62D14DCA
wide distribution	51HLA2D14FCA
wide distribution (emergency light versions)	51HLA2D14FCAD
narrow distribution (for Licross trunking rail)	51HLA1D14GLA
wide distribution (for Licross trunking rail)	51HLA2D14GLA
narrow distribution	51HL61D24HCA
narrow distribution	51HLA1D24MCA
narrow distribution	51HLA1D24NCA
wide distribution	51HL62D24HCA
wide distribution	51HLA2D24MCA
wide distribution	51HLA2D24NCA
wide distribution (emergency light versions)	51HLA2D24MCAD
narrow distribution (for Licross trunking rail)	51HLA1D24NLA
wide distribution (for Licross trunking rail)	51HLA2D24NLA
narrow distribution	51HLA1D34SCA

Accessories

Description	PU	Weight kg	Order No.
cover, ellipsoid distribution, PC, UV-stabilised, L= 313mm, B= 174mm	2 pcs.	0,5	59HL91003
cover, diffuse distribution, PC, UV-stabilised, L= 313mm, B= 174mm	2 pcs.	0,5	59HL91004
cover, glass, L= 313mm, B= 174mm	2 pcs.	0,6	59HL91001
cover, PC, UV-stabilised, L= 313mm, B= 174mm	2 pcs.	0,5	59HL91002
4-fold chain suspension, steel, galvanised	1 pc.	0,5	59HL92001
2-fold chain suspension, steel, galvanised	2 pcs.	0,5	59HL92002
link chain, steel, galvanised	run. m.	0,1	5LY9001
4-fold wire suspension, steel, galvanised	1 pc.	0,5	59HL92004
2-fold wire suspension, steel, galvanised	2 pcs.	0,2	59HL92005
ceiling mounting bracket, steel, galvanised, suspension height 160mm	2 pcs.	1	59HL92006
luminaire connector, steel, galvanised	2 pcs.	1,7	59HL92007
base module, master, white	1 pc.	0,4	59HL94001
base module, slave, white	1 pc.	0,4	59HL94002

Optics	Order number
narrow distribution	51HLA1D14FCB
wide distribution	51HLA2D14FCB
narrow distribution	51HLA1D24MCB
wide distribution	51HLA2D24MCB
wide distribution	51HLA2D26MCB
wide distribution (ball impact resistant)	51HLASD14FGB
wide distribution (ball impact resistant)	51HLASD24MGB
wide distribution (for Licross trunking rail)	51HLA2D24MLB
narrow distribution (for Licross trunking rail)	51HLA1D24MLB

Accessories

Description	PU	Weight kg	Order No.
cover, ellipsoid distribution, PC, UV-stabilised, L= 313mm, B= 174mm	2 pcs.	0,5	59HL91003
cover, diffuse distribution, PC, UV-stabilised, L= 313mm, B= 174mm	2 pcs.	0,5	59HL91004
cover, glass, L= 313mm, B= 174mm	2 pcs.	0,6	59HL91001
cover, PC, UV-stabilised, L= 313mm, B= 174mm	2 pcs.	0,5	59HL91002
4-fold chain suspension, steel, galvanised	1 pc.	0,5	59HL92001
2-fold chain suspension, steel, galvanised	2 pcs.	0,5	59HL92002
link chain, steel, galvanised	run. m.	0,1	5LY9001
4-fold wire suspension, steel, galvanised	1 pc.	0,5	59HL92004
2-fold wire suspension, steel, galvanised	2 pcs.	0,2	59HL92005
ceiling mounting bracket, steel, galvanised, suspension height 160mm	2 pcs.	1	59HL92006
luminaire connector, steel, galvanised	2 pcs.	1,7	59HL92007
base module, master, white	1 pc.	0,4	59HL94001
base module, slave, white	1 pc.	0,4	59HL94002

Optics	Order number
narrow distribution	5NX321D1C0H
wide distribution	5NX322D1C0H
narrow distribution	5NX321D1C0P
narrow distribution	5NX322D1C0P

Accessories

Description	PU	Weight kg	Order No.
mounting bracket, small	1 pc.	0,7	5NX30010
mounting bracket, big	1 pc.	1,1	5NX30011
reflector, Alu-Soft, small	1 pc.	0,8	5NX3001RAH
reflector, Alu-Soft, big	1 pc.	1,0	5NX3001RAP

Compact Highbay

Luminaires

Light source	Colour temperature K	Colour rendering CRI	Rated luminous flux lm	Connected load W	Luminous efficacy lm / W	Control	Weight kg	Optics	Order No.
LED	4.000	> 80	15.000	115	130	ON / OFF	4,3	narrow distr.	5NX32171B0H
LED	4.000	> 80	28.600	220	130	ON / OFF	6,6	narrow distr.	5NX32171B0P
LED	4.000	> 80	15.000	115	130	ON / OFF	4,3	wide distribution	5NX32271B0H
LED	4.000	> 80	28.600	220	130	ON / OFF	6,6	wide distribution	5NX32271B0P

Accessories

Description	PU	Weight kg	Order No.
system connector: plug/socket, IP65, 3-pole, max. 2.5mm ²	1 pc.	0,1	5NX30003
system connector: plug/socket, IP65, 5-pole, max. 2.5mm ²	1 pc.	0,1	5NX30005
mounting bracket, 218mm	1 pc.	1	5NX30007
mounting bracket, 253 mm	1 pc.	1	5NX30008
reflector, ø = 572 mm, PMMA	1 pc.	0,8	5NX3000RPH
reflector, ø = 572 mm, PMMA	1 pc.	0,8	5NX3000RPP
reflector, ø = 460 mm, Alu-Soft	1 pc.	0,5	5NX3000RAH
reflector, ø = 600 mm, Alu-Soft	1 pc.	0,7	5NX3000RAP

Highbay 41

Luminaires

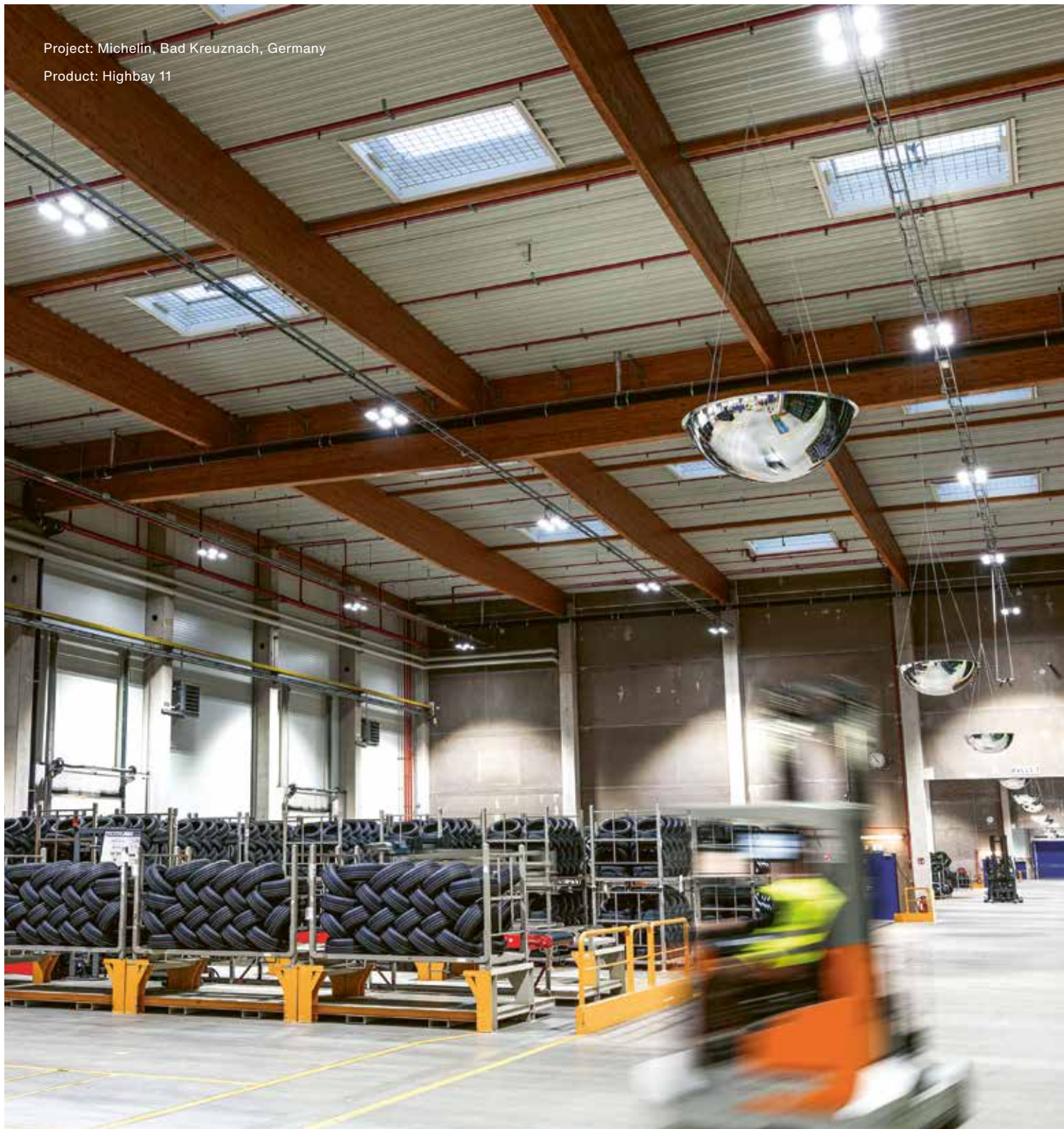
Light source	Colour temperature K	Colour rendering CRI	Rated luminous flux lm	Connected load W	Luminous efficacy lm / W	Control	D mm	Weight kg	Order No.
LED	4.000	> 80	10.500	80	131	ON / OFF	260	2,5	5NJ22271B0G2
LED	4.000	> 80	22.300	165	135	ON / OFF	400	3,8	5NJ22271B0L2

Accessories

Description	PU	Weight kg	Order No.
mounting bracket, 266 mm	1 pc.	0,7	5NJ20003
mounting bracket, 414 mm	1 pc.	1,1	5NJ20004
link chain, steel, galvanised	run. m.	0,1	5LY9001

Project: Michelin, Bad Kreuznach, Germany

Product: Highbay 11



**We take responsibility for your light –
lighting technology designed
and engineered in Germany.**

www.siteco.com